

# MONAGHAN - COUNTY GEOLOGICAL SITE REPORT

<b>NAME OF SITE</b>	<b>Mokeeran Quarry</b>
Other names used for site	
<b>IGH THEME</b>	<b>IGH3 Carboniferous to Pliocene Palaeontology</b>
<b>TOWNLAND(S)</b>	<b>Mokeeran, Kilgally</b>
<b>NEAREST TOWN/VILLAGE</b>	<b>Carrickmacross</b>
<b>SIX INCH MAP NUMBER</b>	<b>34</b>
<b>ITM CO-ORDINATES</b>	<b>683839E 799436N</b>
<b>1:50,000 O.S. SHEET NUMBER</b>	<b>36 GSI BEDROCK 1:100,000 SHEET NO. 8/9, 13</b>

## Outline Site Description

This is a large working quarry, producing agricultural lime.

## Geological System/Age and Primary Rock Type

The quarry is excavated in Lower Carboniferous limestone of the Mullaghfin Formation.

## Main Geological or Geomorphological Interest

The Kingscourt outlier of Permian and Triassic rocks is underlain by the Mullaghfin Formation or associated platform carbonates (deposited in shallow seas on topographic high areas in Carboniferous times). This quarry is a good representative section in the formation, which is not well exposed other than in quarries. A range of fossil corals have been collected here, along with other fauna, and documented in geological papers on the area. The fossils indicate a Lower Carboniferous Asbian age for the limestone.

The development of the north Dublin and Meath Carboniferous limestone environments, which was controlled by relative movement of structural blocks to form shallow platforms separated by deeper-water basins, has been well studied and observations from Mokeeran Quarry provided significant data in support of the overall picture.

## Site Importance – County Geological Site

A good representative section of the Carboniferous geology surrounding the Kingscourt outlier.

## Management/promotion issues

The quarry is a private business producing agricultural lime and is not suited to general promotion of geology.



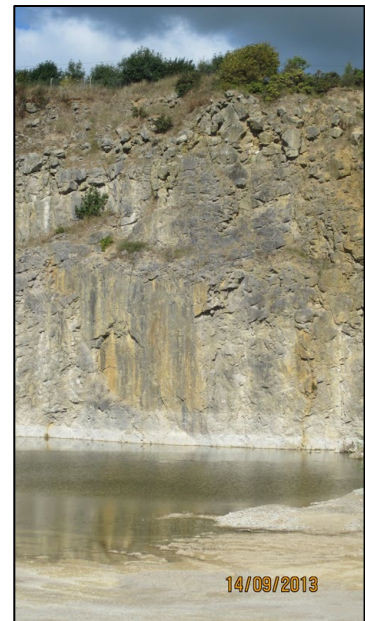
A view of the quarry from the western margin.



A view into the main deepest part of Mokeeran Quarry.



Left: A rare section of karstified limestone in the quarry, with enlarged joints and voids.



Right: The more typical clean, bedded limestone present in the quarry.



