

# ROSCOMMON - COUNTY GEOLOGICAL SITE REPORT

<b>NAME OF SITE</b>	<b>Pollnagran</b>		
Other names used for site			
<b>IGH THEME</b>	<b>IGH1 Karst</b>		
<b>TOWNLAND(S)</b>	<b>Leggatinty</b>		
<b>NEAREST TOWN</b>	<b>Frenchpark</b>		
<b>SIX INCH MAP NUMBER</b>	<b>15</b>		
<b>NATIONAL GRID REFERENCE</b>	<b>173510 289696</b>		
<b>1:50,000 O.S. SHEET NUMBER</b>	<b>33</b>	<b>1/2 inch Sheet No.</b>	<b>12</b>

## **Outline Site Description**

Pollnagran is a 750m long, active stream cave.

## **Geological System/Age and Primary Rock Type**

The cave is post-glacial (Holocene) in age.

## **Main Geological or Geomorphological Interest**

This is the only active stream cave in Roscommon, and at 750m long is not insignificant. It was discovered in 2003 by two scientific cavers exploring all known and potential cave sites in Roscommon.

The cave has an entrance in a shallow blind valley where a surface stream disappears underground, although a second stream combines with the first a short distance in. The cave is then a single linear passage trending northeast until it becomes impassable. It follows a single bedding plane down a very shallow dip of 2-3 degrees and is a vadose trench. This means there is water cutting down in a trench, but with air above.

Scalloping of the walls is of small size and indicates fast flowing water. There are zones with roof breakdown, and many deposits of cobbles, sand and silt from reworking of the glacial till on which the surface stream flows before sinking into the limestone. There are also some calcite deposits inside the cave, cementing the fill material as false floors. The cave is near the surface as there are zones of active collapse in the overlying fields.

## **Site Importance – County Geological Site**

As a rare active stream cave, this site merits being a County Geological Site, and it is unusual in the context of the widespread karstic terrain in County Roscommon.

## **Management/promotion issues**

The cave has a very tight entrance providing its own restriction to all but small and determined cavers. It is on private land and is not suitable for promotion.



The cave entrance is at the end of the blind valley in the bramble vegetation.

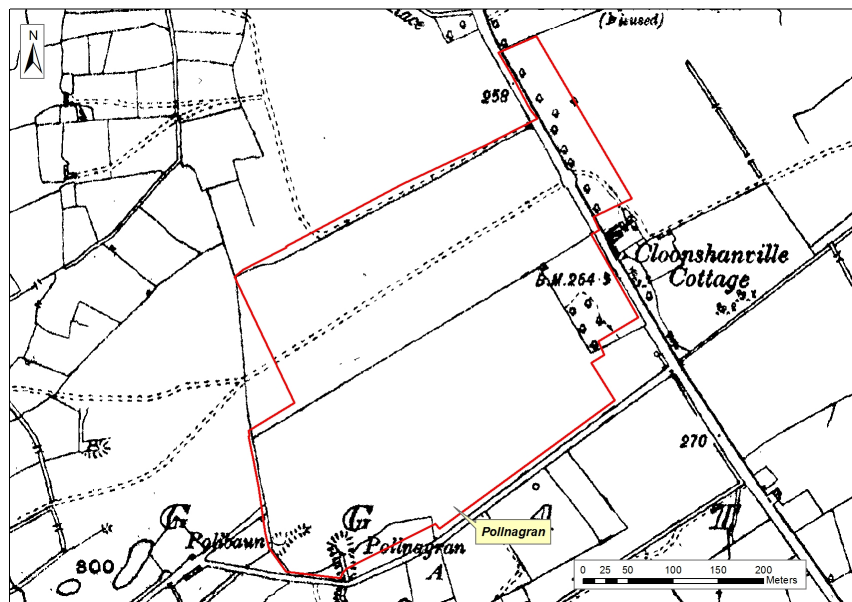
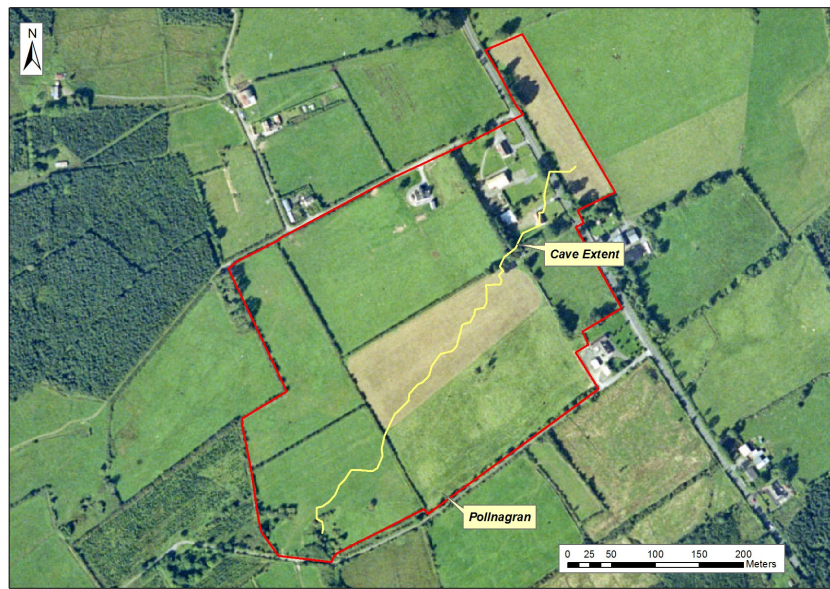
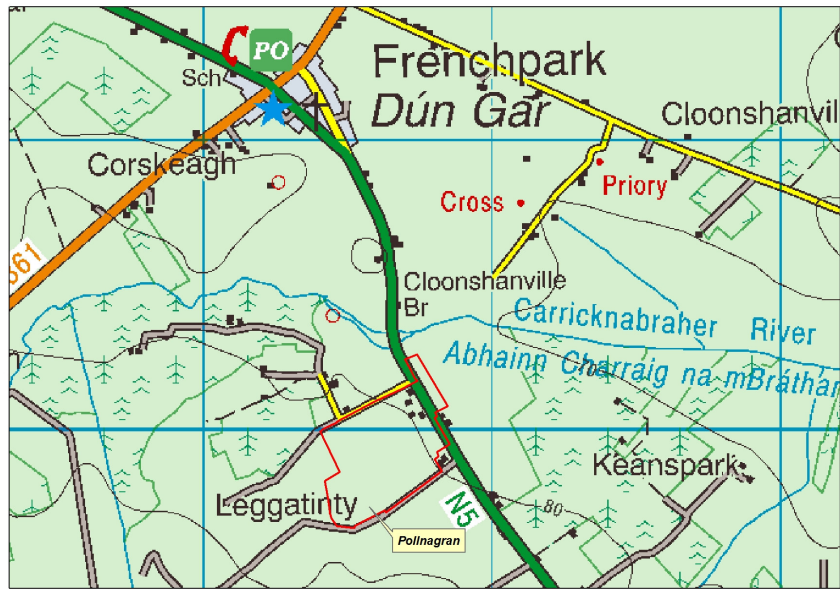


The cave entrance.



The stream that forms the cave.





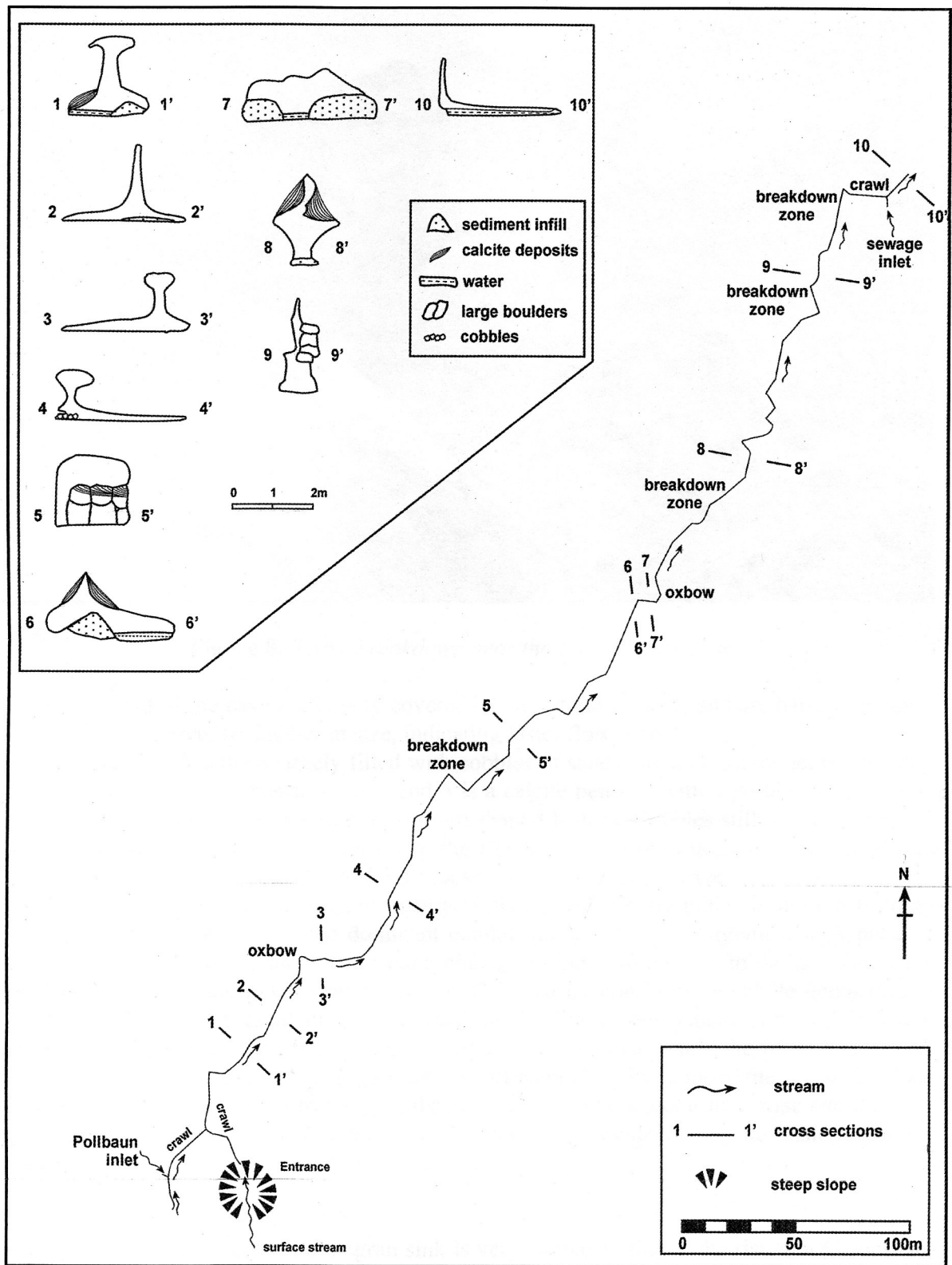


Figure 7. Plan survey of Pollnagran.