

TIPPERARY - COUNTY GEOLOGICAL SITE REPORT

NAME OF SITE	Marlfield
Other names used for site	St. Patrick's Well
IGH THEME	IGH16 Hydrogeology
TOWNLAND(S)	Patrickswell, Marlfield
NEAREST TOWN/VILLAGE	Marlfield
SIX INCH MAP NUMBER	83
ITM CO-ORDINATES	616870E 622920N (spring), 617040E 622200N (lake)
1:50,000 O.S. SHEET NUMBER 74	GSI BEDROCK 1:100,000 SHEET NO. 22

Outline Site Description

Holy well site and downstream lake.

Geological System/Age and Primary Rock Type

Lower Carboniferous (Mississippian) Kilsheelan Formation limestone.

Main Geological or Geomorphological Interest

The site of the spring is known as St. Patrick's Well and comprises a formally laid out area that includes a small man-made pond, a walled 'well' that issues into the pond and the ruins of a small chapel or oratory. The pond discharges southwards and the water feeds Marlfield lake, which was created by damming the southern end in 1773 to power a mill. Marlfield is a wildfowl sanctuary and proposed NHA.

The main geological interest is at the spring site where the lake and 'well' are both fed by water that flows upwards from the limestone bedrock. Tiny springs can be seen to emerge from floor of the 'well' and pond as constant streams of bubbles rising to surface. Although individual 'springs' are very small, the cumulative flow is very large as evidenced by the discharge from the southern end of the pond.

Site Importance – County Geological Site

This is an excellent example of a limestone spring, in this case housed within a holy well site.

Management/promotion issues

This is a well-known site near Clonmel and is popular with visitors. A signboard at the entrance, now somewhat faded, explains the religious background. This would be a suitable place to include some geological background on the springs.



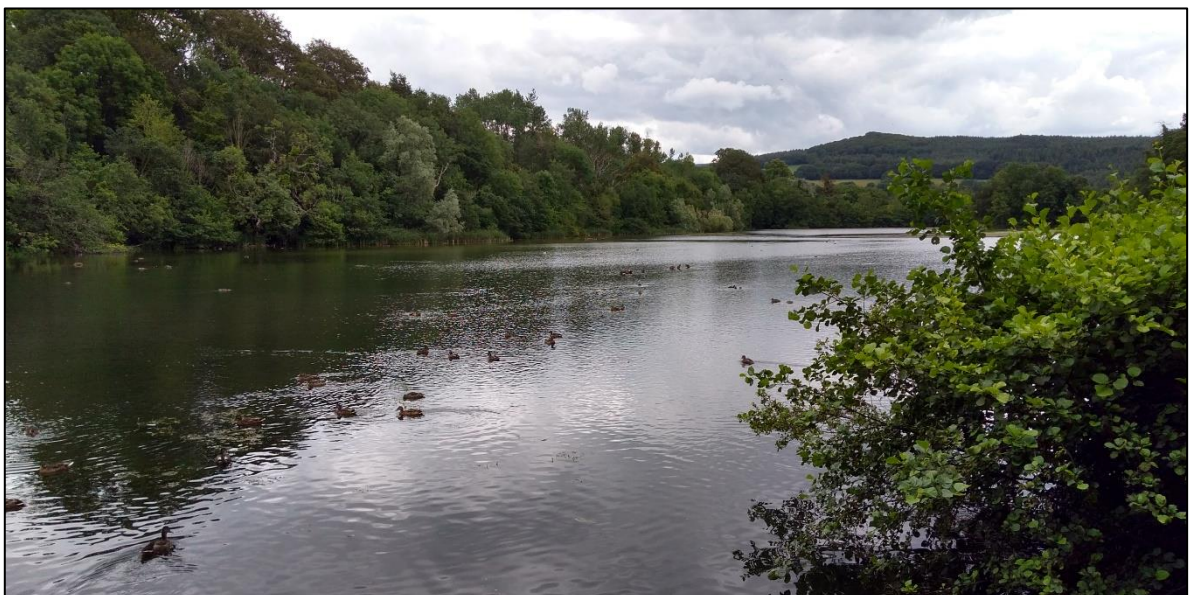
View of St. Patrick's Well site, spring-fed pond in foreground and, in background, well (right) and St. Patrick's Church (left).



St. Patrick's Well enclosure; multiple concentric ripples on surface created by springs.



Discharge from site at southern end of pond where it joins smaller flow from stream and then flows south to feed Marfield Lake.



Marfield lake, wildfowl reserve, view to south.

