

## TIPPERARY - COUNTY GEOLOGICAL SITE REPORT

<b>NAME OF SITE</b>	Seefin		
Other names used for site			
<b>IGH THEME</b>	IGH10 Devonian		
<b>TOWNLAND(S)</b>	Skeheenaranky		
<b>NEAREST TOWN/VILLAGE</b>	Mitchelstown (Cork), Caher		
<b>SIX INCH MAP NUMBER</b>	80		
<b>ITM CO-ORDINATES</b>	589025E 919775N (summit)		
<b>1:50,000 O.S. SHEET NUMBER</b>	74	<b>GSI BEDROCK 1:100,000 SHEET NO.</b>	22

### Outline Site Description

The summit of Seefin has a series of rock exposures, mostly of low cliffs as an escarpment on the northeastern side.

### Geological System/Age and Primary Rock Type

The rock exposures on the summit of Seefin are Upper Devonian in age, and are mapped as the Slievenamuck Conglomerate Formation.

### Main Geological or Geomorphological Interest

Thick bedded (0.5 to 2 m thick) conglomerates are well exposed on the summit of Seefin, providing a good representative exposure of one of the seven Devonian aged formations mapped in the Galtees, five of which are conglomeratic. There are purple coloured, coarse sandstones interbedded with the conglomerates. The clasts within the conglomerates are quite varied but are mostly vein quartz, quartzite, jasper and chert.

The rocks are largely *in situ* although there has been some foundering and slipping of large blocks in the escarpment edges.

### Site Importance – County Geological Site

Despite their large area and height, the actual exposure of rocks such as these conglomerates across the Galtees is relatively sparse and sites such as Seefin provide a good representative example worthy of County Geological Site status.

### Management/promotion issues

The rock exposures are presumed to be on private farmland or commonage and no access should be presumed without landowner permission. It is situated adjacent to where one of the main walking trails for the Galtee summits is provided for with a carpark and maintaining the good relationships between hillwalkers and landowners is a vital thing here. There is no trail to Seefin's summit and it is only a small low foothill of the Galtees proper.



Galtymore from Seefin.



Knockmealdowns from Seefin.



Pebble conglomerates exposed on Seefin.

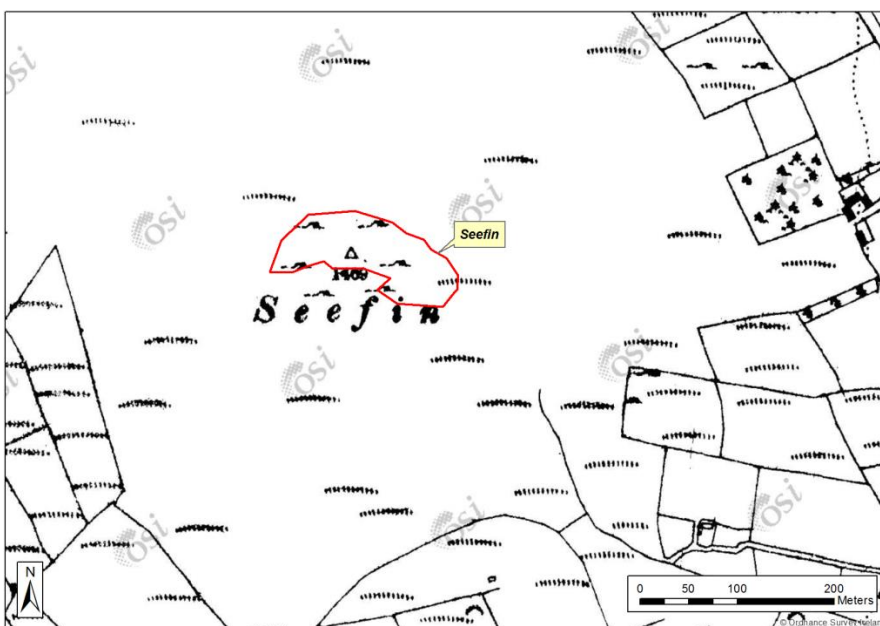
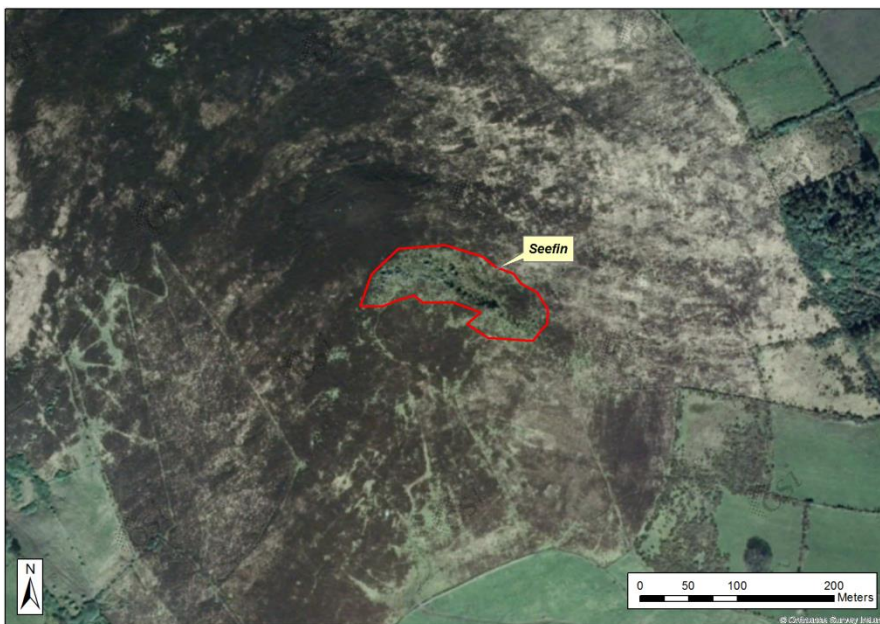
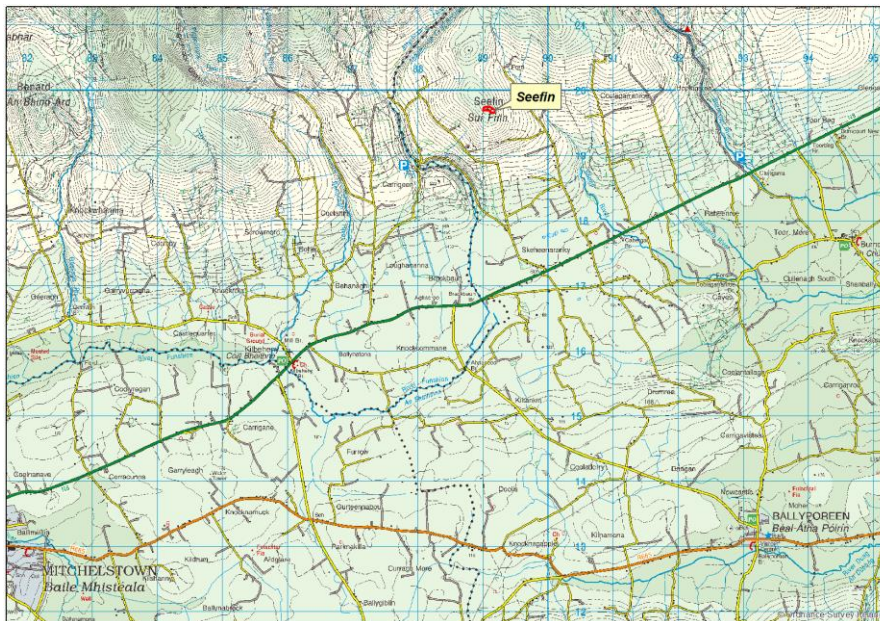


Cross bedding in conglomerates on Seefin.



Pebble conglomerates exposed on the summit of Seefin.





Gallagher *et al.* 2019. Geological Survey Ireland.