

WEXFORD - COUNTY GEOLOGICAL SITE REPORT

NAME OF SITE	Shelmaliere Commons Quarry
Other names used for site	Carrigfoyle Quarry; Carrickfoyle Quarry Barntown; Windgap Rocks
IGH THEME	IGH4 Cambrian - Silurian
TOWNLAND(S)	Shelmaliere Commons (ED Forth)
NEAREST TOWN/VILLAGE	Wexford
SIX INCH MAP NUMBER	37, 42
ITM CO-ORDINATES	698550E 620390N
1:50,000 O.S. SHEET NUMBER	77
	GSi BEDROCK 1:100,000 SHEET NO. 23

Outline Site Description

A disused quarry on Forth Mountain west of Wexford town. The quarry floor is now flooded.

Geological System/Age and Primary Rock Type

Bedrock comprises Shelmaliere Formation quartzite. The main economic material extracted at the site was quartzite for aggregate.

Main Geological or Geomorphological Interest

There are excellent exposures of quartzite throughout this site, including deposits of quartz-sands sourced from the quarried rock. At the west side of the quarry, a high, thick rockwall/cliff remains. The north face of the rockwall/cliff hosts well-preserved large-scale flute casts, occupying the base of the overturned strata. The foot of this steeply inclined cliff is heavily vegetated. However the flute casts are best viewed from the top of the remaining quarry infrastructure to the immediate east of the rockwall/cliff. The base of the Shelmaliere Formation quartzite, passing down into cleaved metagreywacke rocks (Cullentra Formation), is reported to be visible in a run-off channel at the south end of this wall/cliff.

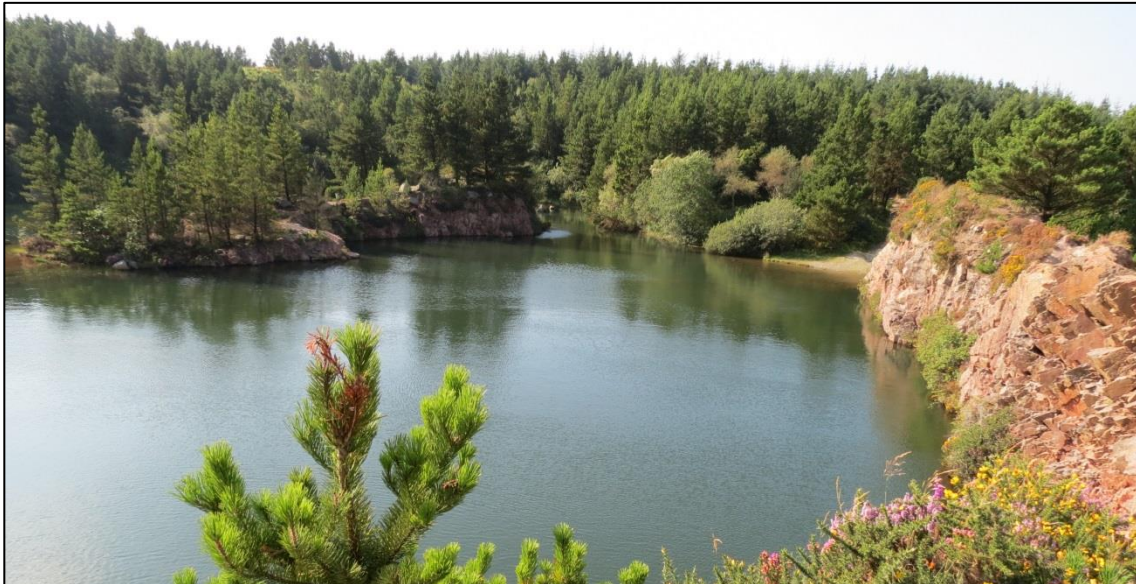
Site Importance – County Geological Site

This is the type locality for the Cambrian age Shemaliere Formation and is an important County Geological Site. The pink-yellow colour of the quartzite coupled with the surrounding forestry and the view of the low-lying Wexford landscape from this elevated position/location makes this a very unique and visually dramatic site.

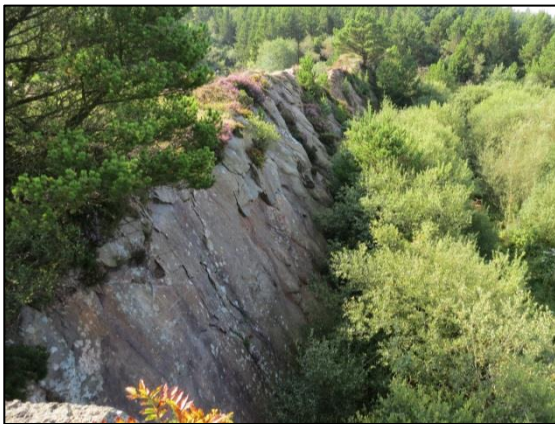
Management/promotion issues

The quarry is referred to as Carrigfoyle Quarry (List of Quarries 1982), most likely due to the proximity of Carrigfoyle Rock (698178E 619850N) to the southwest. It is also known as Barntown Quarry, though Barntown townland is situated a few kilometres northeast of the quarry.

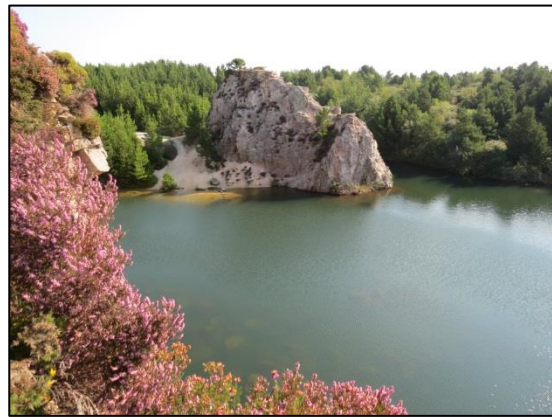
This is a popular site for people to visit. Access to the quarry is via forestry tracks and roads. Foot trails around the perimeter of the quarry can run close to the edge of steep and high quarry faces that overhang the artificial lake. Extreme care should be taken when approaching quarry due to high ledges, loose material and deep water.



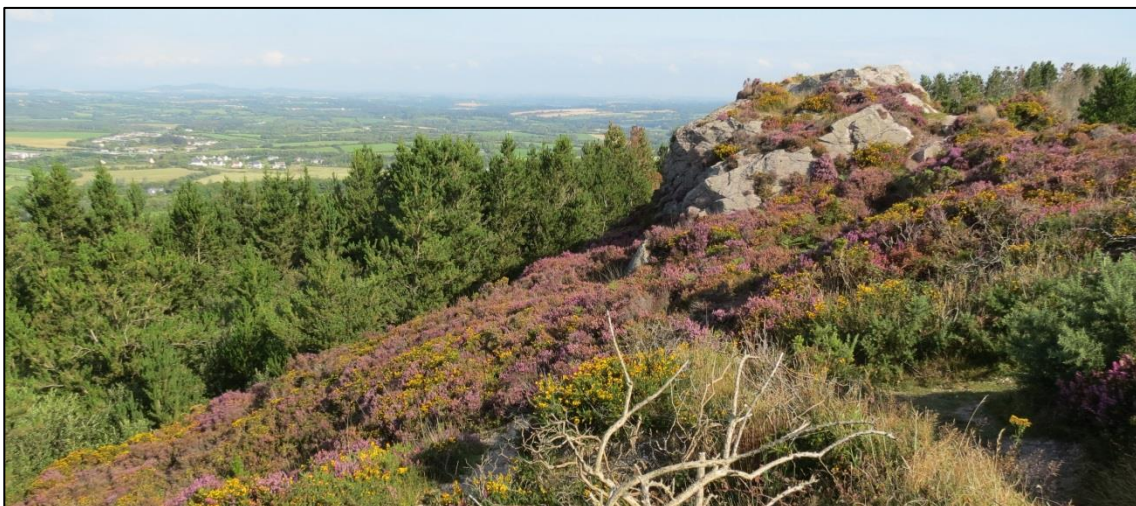
View of west end of flooded quarry from top of quarry face.



Flute casts on north facing cliff-face.



East side of flooded quarry.



View from Shelmaliere Quarry looking northeast towards Enniscorthy.

