

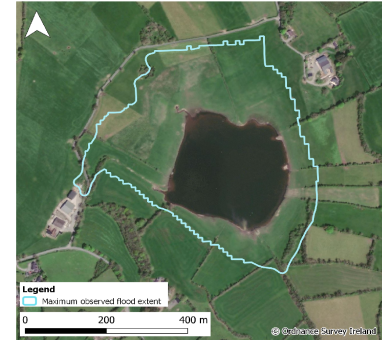


Monitoring Station Data Sheet

Moylan Lough, County Monaghan

Station Details

Site Name	Moylan Lough
County	Monaghan
X,Y (ITM)	685207, 808858
Site ID	06074
Monitoring Type	GSI ACTIVE TELEMETRY
URL	https://gwlevel.ie/?place=00019_001_tl_gs
Monitoring Period	07 Jul, 2019 - Ongoing
Current Logger Datum	54.3 mAOD
Lowest Known Elevation	54.3 mAOD



Peak Flood Observations

Details of the highest levels recorded by Geological Survey Ireland or external organisations (if available)

	GSI data	External data
Max Depth (m)*	12.23	
Max Stage (mAOD)	66.53	
Max Volume (m ³)	1,635,580	
Max Area (m ²)	224,228	
Date Occurred	20 Mar, 2020	

