

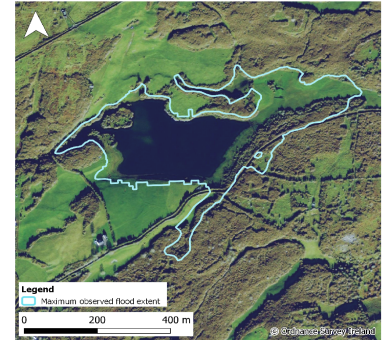


Monitoring Station Data Sheet

Lough Aleenaun, County Clare

Station Details

Site Name	Lough Aleenaun
County	Clare
X,Y (ITM)	524813, 695558
Site ID	27076
Monitoring Type	GSI ACTIVE TELEMETRY
URL	https://gwlevel.ie/?place=00016_001_tl_gs
Monitoring Period	01 Dec, 2016 - Ongoing
Current Logger Datum	70.87 mAOD
Lowest Known Elevation	70.5 mAOD

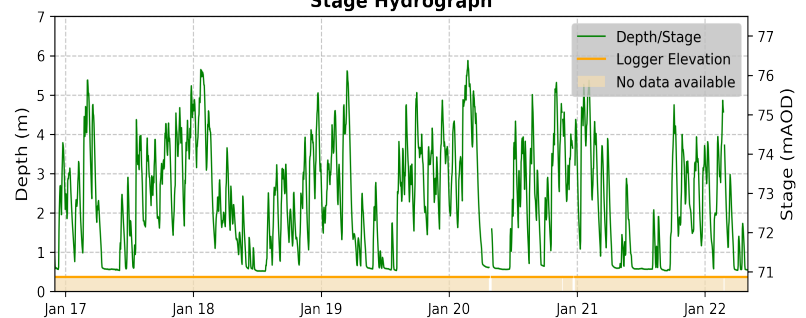


Peak Flood Observations

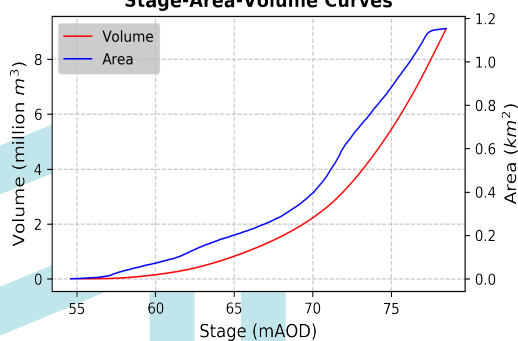
Details of the highest levels recorded by Geological Survey Ireland or external organisations (if available)

	GSI data	External data
Max Depth (m)*	5.9	
Max Stage (mAOD)	76.4	
Max Volume (m ³)	6,772,795	
Max Area (m ²)	1,023,706	
Date Occurred	25 Feb, 2020	

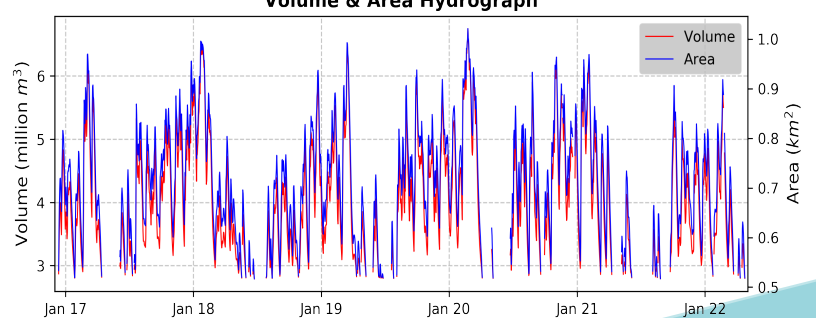
Stage Hydrograph



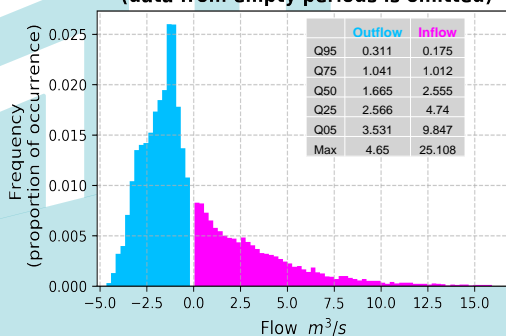
Stage-Area-Volume Curves



Volume & Area Hydrograph



Distribution of Average Daily Net Flows (data from empty periods is omitted)



Average Daily Net Flow Hydrograph

