

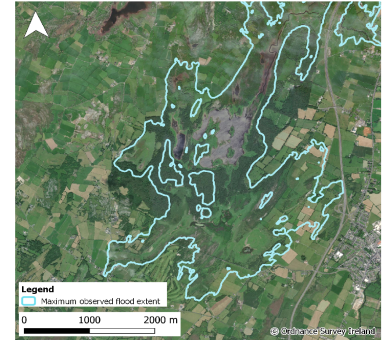


Monitoring Station Data Sheet

Coole Lough, County Galway

Station Details

| | |
|------------------------|---|
| Site Name | Coole Lough |
| County | Galway |
| X,Y (ITM) | 543069, 704291 |
| Site ID | 29073 |
| Monitoring Type | GSI ACTIVE TELEMETRY |
| URL | https://gwlevel.ie/?place=00003_001_tl_gs |
| Monitoring Period | 25 Nov, 2016 - Ongoing |
| Current Logger Datum | 5.27 mAOD |
| Lowest Known Elevation | 0.0 mAOD |



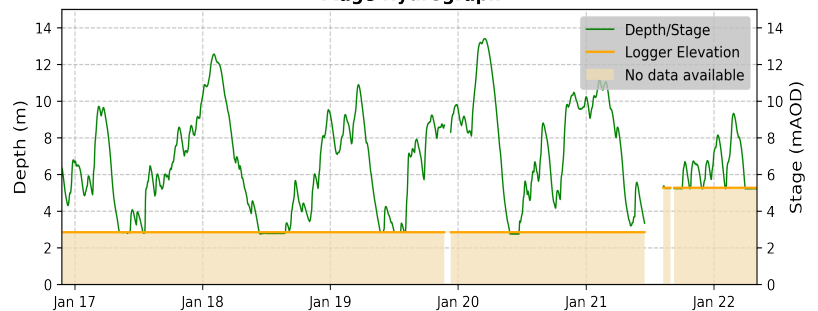
Peak Flood Observations

Details of the highest levels recorded by Geological Survey Ireland or external organisations (if available)

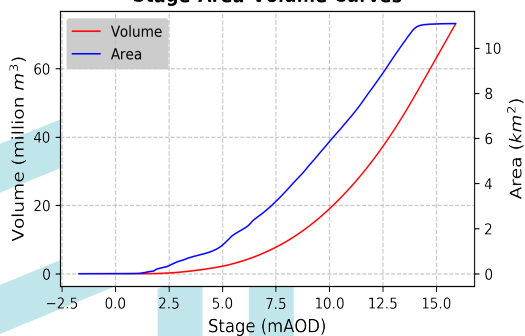
| | GSI data | External data |
|------------------------------|--------------|---------------|
| Max Depth (m) | 13.4 | 14.74 |
| Max Stage (mAOD) | 13.4 | 14.74* |
| Max Volume (m ³) | 45,814,007 | 60,318,356 |
| Max Area (m ²) | 10,150,419 | 11,061,860 |
| Date Occured | 18 Mar, 2020 | Winter 15/16 |

*Source: Gort Flood Relief Scheme, historic flood levels report. Ryan Hanley June 2018

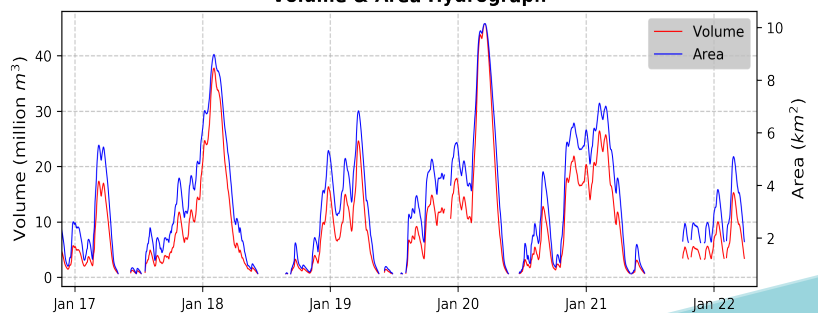
Stage Hydrograph



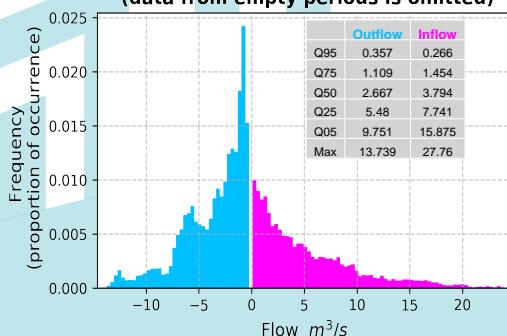
Stage-Area-Volume Curves



Volume & Area Hydrograph



Distribution of Average Daily Net Flows (data from empty periods is omitted)



Average Daily Net Flow Hydrograph

