

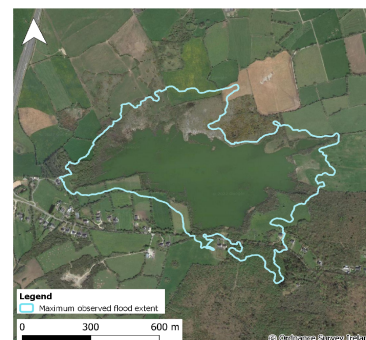


# Monitoring Station Data Sheet

## Caranavoodaun, County Galway

### Station Details

Site Name	Caranavoodaun
County	Galway
X,Y (ITM)	545270, 715304
Site ID	29075
Monitoring Type	GSI ACTIVE TELEMETRY
URL	<a href="https://gwlevel.ie/?place=00005_001_tl_gs">https://gwlevel.ie/?place=00005_001_tl_gs</a>
Monitoring Period	15 Sep, 2016 - Ongoing
Current Logger Datum	22.7 mAOD
Lowest Known Elevation	21.9 mAOD



### Peak Flood Observations

Details of the highest levels recorded by Geological Survey Ireland or external organisations (if available)

	GSI data	External data
Max Depth (m)*	3.28	
Max Stage (mAOD)	25.18	
Max Volume (m <sup>3</sup> )	722,744	
Max Area (m <sup>2</sup> )	463,823	
Date Occurred	16 Mar, 2020	

