

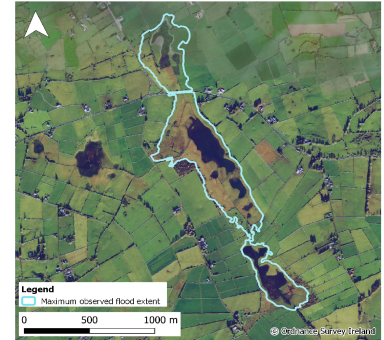


# Monitoring Station Data Sheet

## B4 Kilglassaun, County Mayo

### Station Details

Site Name	B4 Kilglassaun
County	Mayo
X,Y (ITM)	527381, 764519
Site ID	30115
Monitoring Type	GSI ACTIVE TELEMETRY
URL	<a href="https://gwlevel.ie/?place=30115_001_tl_gs">https://gwlevel.ie/?place=30115_001_tl_gs</a>
Monitoring Period	01 Mar, 2011 - Ongoing
Current Logger Datum	34.08 mAOD
Lowest Known Elevation	30.9 mAOD

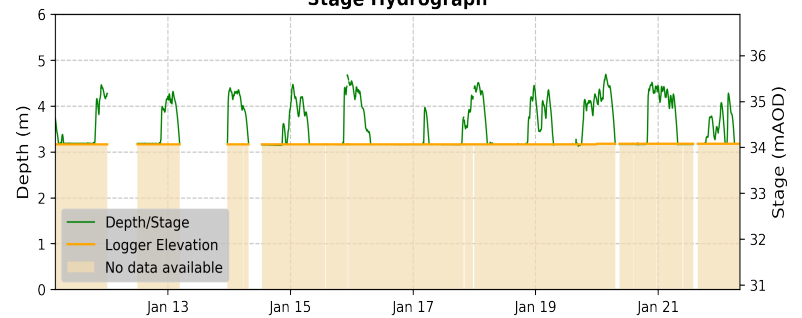


### Peak Flood Observations

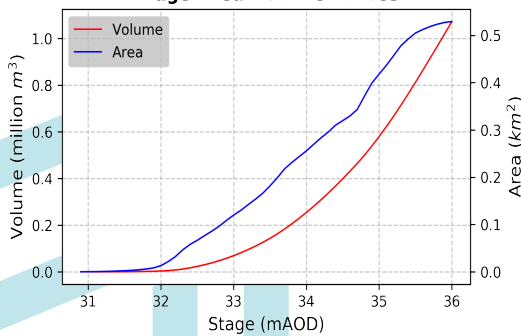
Details of the highest levels recorded by Geological Survey Ireland or external organisations (if available)

	GSI data	External data
Max Depth (m)*	4.69	
Max Stage (mAOD)	35.59	
Max Volume (m <sup>3</sup> )	859,426	
Max Area (m <sup>2</sup> )	511,765	
Date Occurred	25 Feb, 2020	

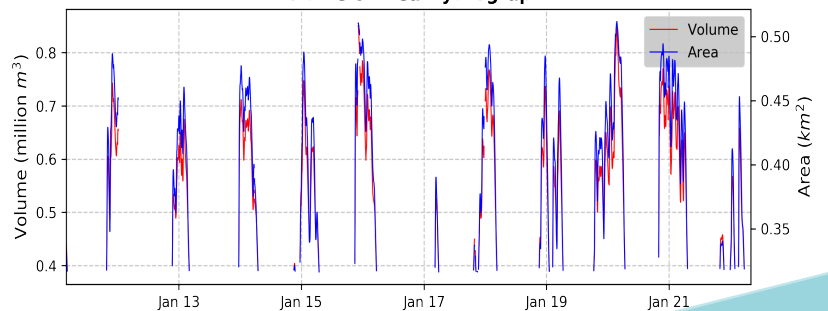
### Stage Hydrograph



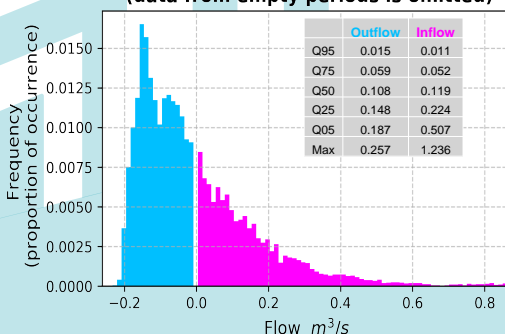
### Stage-Area-Volume Curves



### Volume & Area Hydrograph



### Distribution of Average Daily Net Flows (data from empty periods is omitted)



### Average Daily Net Flow Hydrograph

