

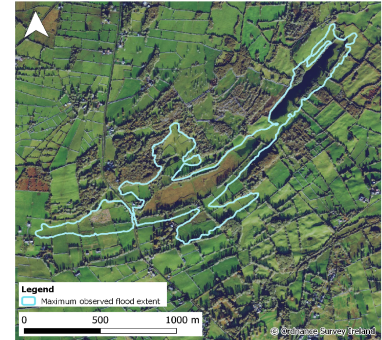


# Monitoring Station Data Sheet

## Ballyshingadaun, County Mayo

### Station Details

Site Name	Ballyshingadaun
County	Mayo
X,Y (ITM)	519411, 757130
Site ID	W53007
Monitoring Type	GSI NON-ACTIVE
URL	
Monitoring Period	23 Jun, 2017 - 11 Sep, 2019
Current Logger Datum	18.57 mAOD
Lowest Known Elevation	17.5 mAOD



### Peak Flood Observations

Details of the highest levels recorded by Geological Survey Ireland or external organisations (if available)

	GSI data	External data
Max Depth (m)*	4.89	
Max Stage (mAOD)	22.39	
Max Volume (m <sup>3</sup> )	1,136,058	
Max Area (m <sup>2</sup> )	518,047	
Date Occurred	20 Dec, 2018	

