

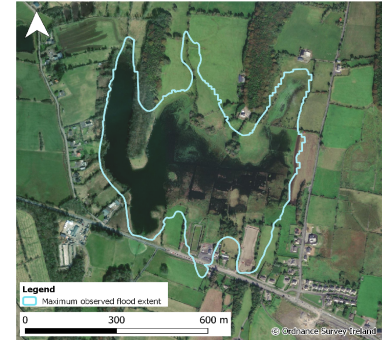


Monitoring Station Data Sheet

Drumadoon, County Mayo

Station Details

Site Name	Drumadoon
County	Mayo
X,Y (ITM)	524401, 785705
Site ID	W53011
Monitoring Type	GSI NON-ACTIVE
URL	
Monitoring Period	21 Jun, 2017 - 14 Aug, 2018
Current Logger Datum	34.37 mAOD
Lowest Known Elevation	32.69 mAOD



Peak Flood Observations

Details of the highest levels recorded by Geological Survey Ireland or external organisations (if available)

	GSI data	External data
Max Depth (m)	4.86	5.31
Max Stage (mAOD)	37.55	38.0*
Max Volume (m ³)	477,358	615,166
Max Area (m ²)	291,011	321,500
Date Occured	16 Feb, 2018	Winter 15/16

*Source:

