

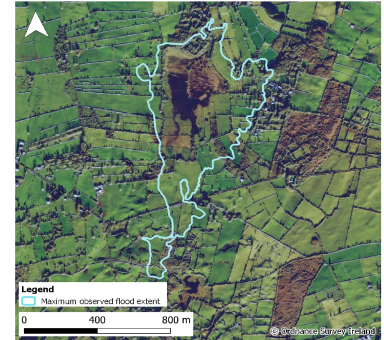


Monitoring Station Data Sheet

Turloughmore, County Mayo

Station Details

| | |
|------------------------|-----------------------------|
| Site Name | Turloughmore |
| County | Mayo |
| X,Y (ITM) | 520614, 758895 |
| Site ID | W53016 |
| Monitoring Type | GSI NON-ACTIVE |
| URL | |
| Monitoring Period | 22 Jun, 2017 - 29 Jul, 2019 |
| Current Logger Datum | 19.25 mAOD |
| Lowest Known Elevation | 19.1 mAOD |



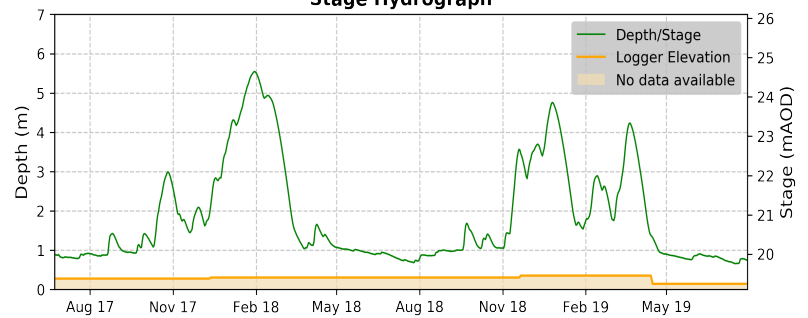
Peak Flood Observations

Details of the highest levels recorded by Geological Survey Ireland or external organisations (if available)

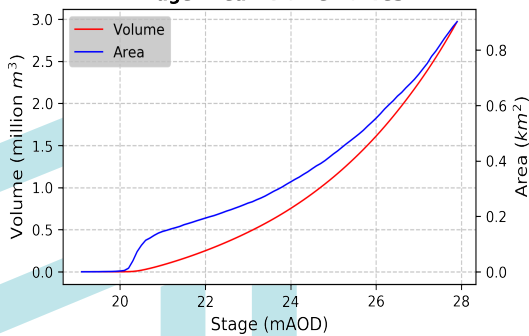
| | GSI data | External data |
|------------------------------|--------------|---------------|
| Max Depth (m) | 5.54 | 8.03 |
| Max Stage (mAOD) | 24.64 | 27.13* |
| Max Volume (m ³) | 981,444 | 2,338,987 |
| Max Area (m ²) | 385,803 | 738,449 |
| Date Occured | 31 Jan, 2018 | Winter 15/16 |

*Source: South Mayo (The Neale), historic flood levels report. Ryan Hanley May 2019

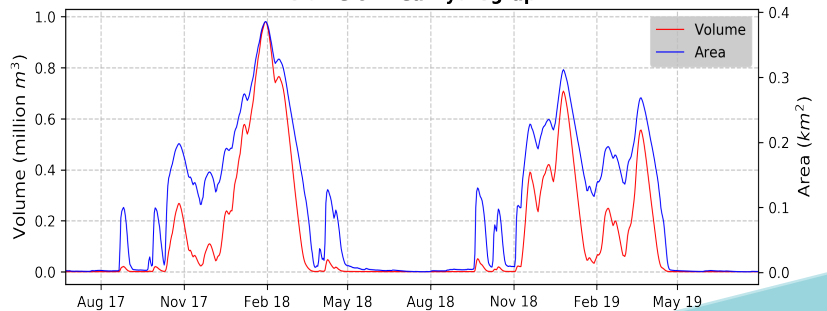
Stage Hydrograph



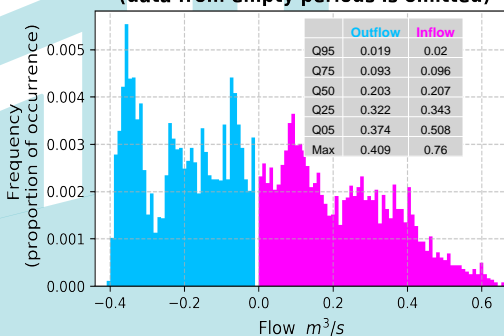
Stage-Area-Volume Curves



Volume & Area Hydrograph



Distribution of Average Daily Net Flows (data from empty periods is omitted)



Average Daily Net Flow Hydrograph

