

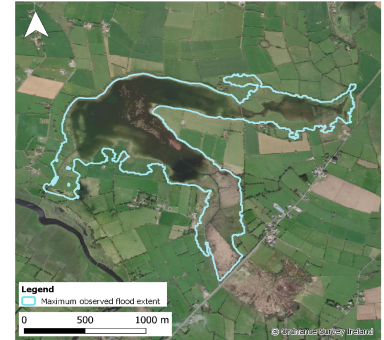


Monitoring Station Data Sheet

Ballinturly, County Roscommon

Station Details

Site Name	Ballinturly
County	Roscommon
X,Y (ITM)	583710, 760210
Site ID	W54005
Monitoring Type	GSI NON-ACTIVE
URL	
Monitoring Period	18 Nov, 2016 - 16 Oct, 2018
Current Logger Datum	46.18 mAOD
Lowest Known Elevation	45.77 mAOD

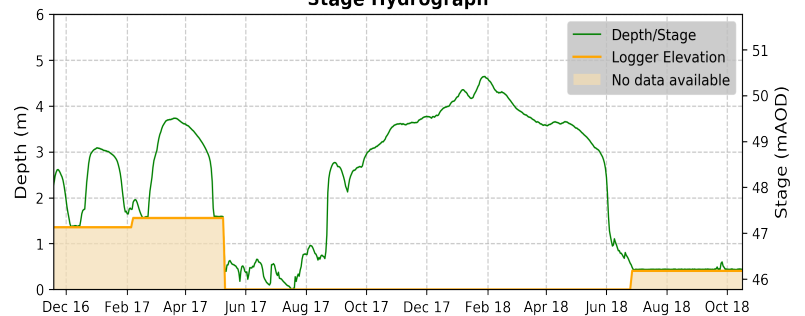


Peak Flood Observations

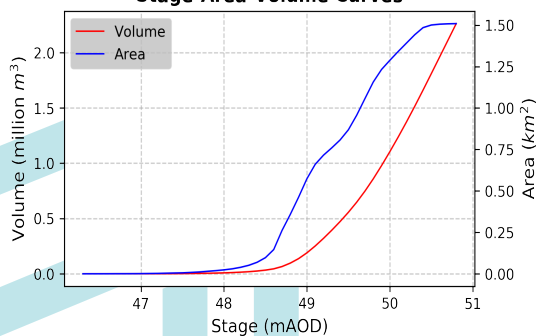
Details of the highest levels recorded by Geological Survey Ireland or external organisations (if available)

	GSI data	External data
Max Depth (m)*	4.65	
Max Stage (mAOD)	50.42	
Max Volume (m ³)	1,685,675	
Max Area (m ²)	1,487,523	
Date Occurred	28 Jan, 2018	

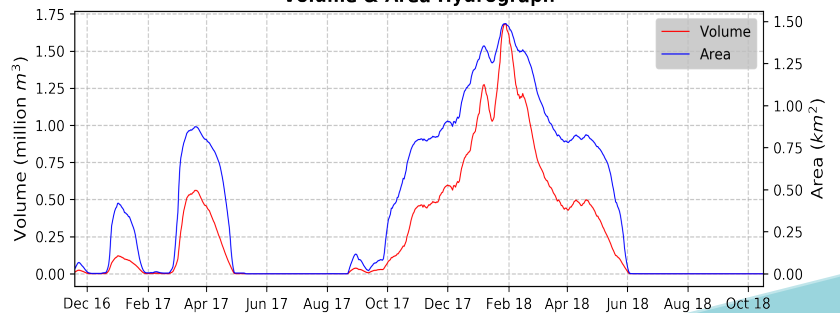
Stage Hydrograph



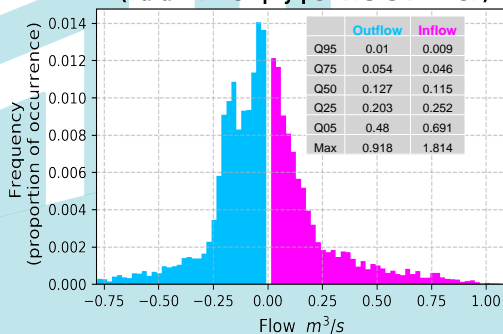
Stage-Area-Volume Curves



Volume & Area Hydrograph



Distribution of Average Daily Net Flows (data from empty periods is omitted)



Average Daily Net Flow Hydrograph

