

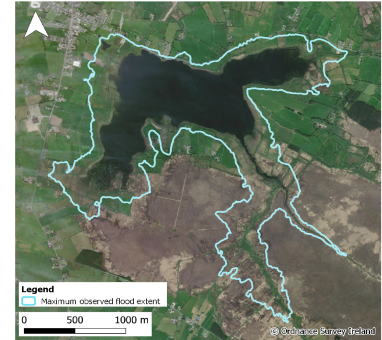


Monitoring Station Data Sheet

Glenamaddy, County Galway

Station Details

Site Name	Glenamaddy
County	Galway
X,Y (ITM)	563635, 761489
Site ID	W59009
Monitoring Type	GSI ACTIVE TELEMETRY
URL	https://gwlevel.ie/?place=59009_001_tl_gs
Monitoring Period	21 Jun, 2017 - Ongoing
Current Logger Datum	75.32 mAOD
Lowest Known Elevation	71.34 mAOD

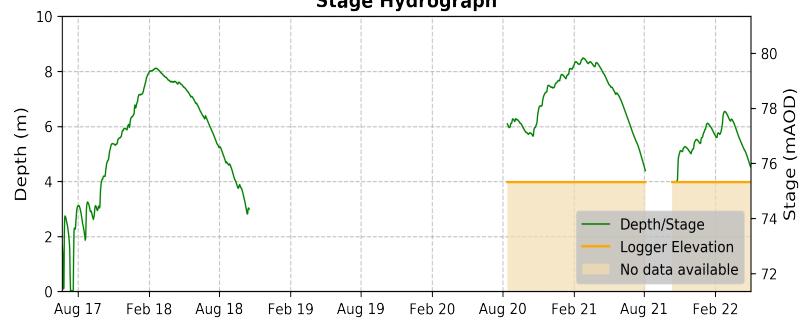


Peak Flood Observations

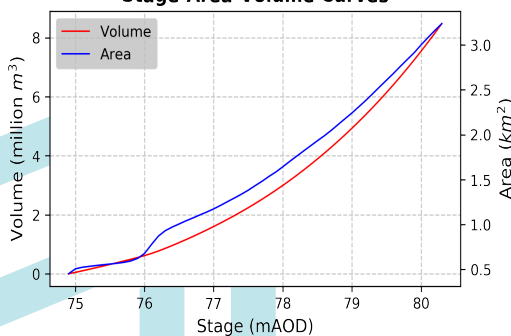
Details of the highest levels recorded by Geological Survey Ireland or external organisations (if available)

	GSI data	External data
Max Depth (m)*	8.49	
Max Stage (mAOD)	79.83	
Max Volume (m ³)	7,040,582	
Max Area (m ²)	2,858,773	
Date Occurred	25 Feb, 2021	

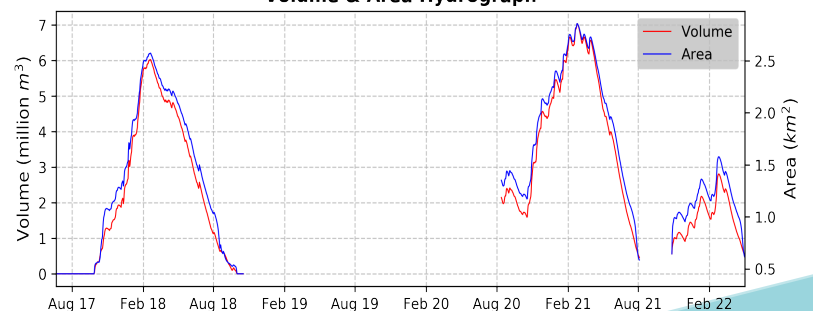
Stage Hydrograph



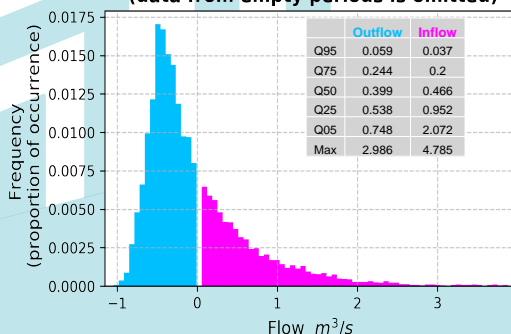
Stage-Area-Volume Curves



Volume & Area Hydrograph



Distribution of Average Daily Net Flows (data from empty periods is omitted)



Average Daily Net Flow Hydrograph

