

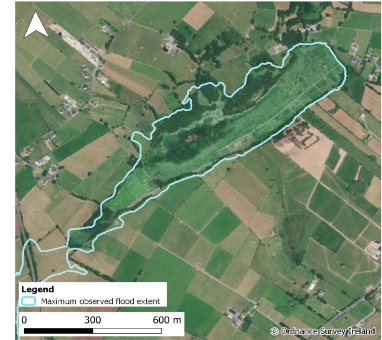


Monitoring Station Data Sheet

Ballinduff, County Galway

Station Details

Site Name	Ballinduff
County	Galway
X,Y (ITM)	546022, 708041
Site ID	W59020
Monitoring Type	GSI NON-ACTIVE
URL	
Monitoring Period	25 Nov, 2016 - 07 Aug, 2019
Current Logger Datum	11.94 mAOD
Lowest Known Elevation	10.4 mAOD



Peak Flood Observations

Details of the highest levels recorded by Geological Survey Ireland or external organisations (if available)

	GSI data	External data
Max Depth (m)*	4.79	
Max Stage (mAOD)	15.19	
Max Volume (m ³)	726,482	
Max Area (m ²)	339,089	
Date Occurred	26 Jan, 2018	

