

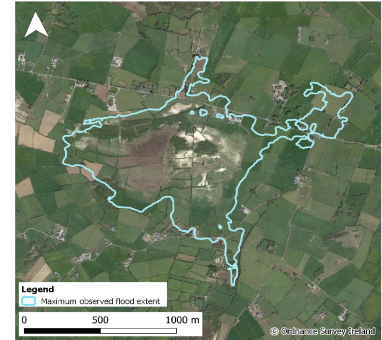


Monitoring Station Data Sheet

Cahermore, County Galway

Station Details

Site Name	Cahermore
County	Galway
X,Y (ITM)	541473, 707889
Site ID	W59025
Monitoring Type	GSI NON-ACTIVE
URL	
Monitoring Period	01 Dec, 2016 - 28 Aug, 2019
Current Logger Datum	4.07 mAOD
Lowest Known Elevation	3.96 mAOD



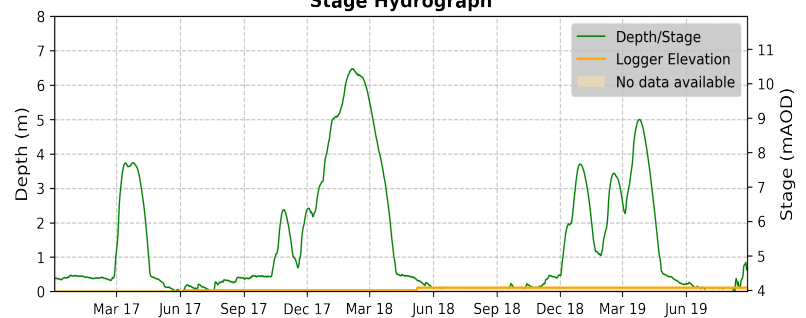
Peak Flood Observations

Details of the highest levels recorded by Geological Survey Ireland or external organisations (if available)

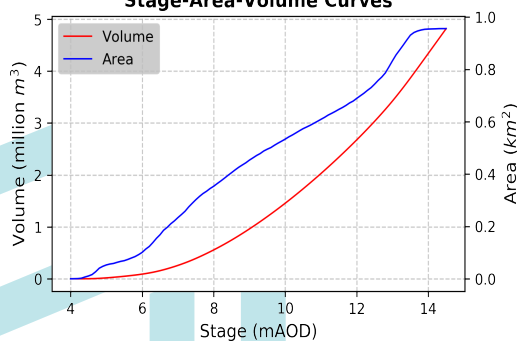
	GSI data	External data
Max Depth (m)	6.48	9.64
Max Stage (mAOD)	10.44	13.6*
Max Volume (m ³)	1,699,145	3,960,401
Max Area (m ²)	569,075	941,100
Date Occured	04 Feb, 2018	Winter 15/16

*Source: Gort Flood Relief Scheme, historic flood levels report. Ryan Hanley June 2018

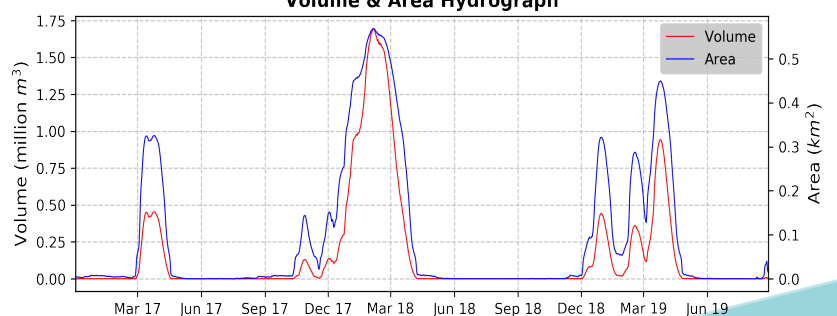
Stage Hydrograph



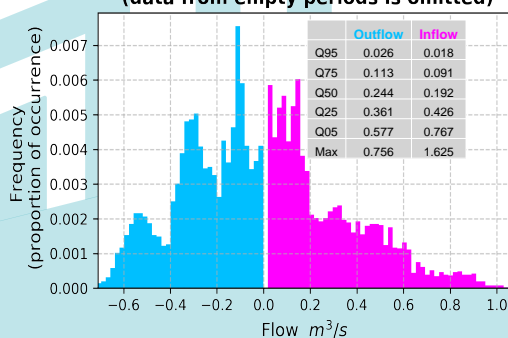
Stage-Area-Volume Curves



Volume & Area Hydrograph



Distribution of Average Daily Net Flows (data from empty periods is omitted)



Average Daily Net Flow Hydrograph

