

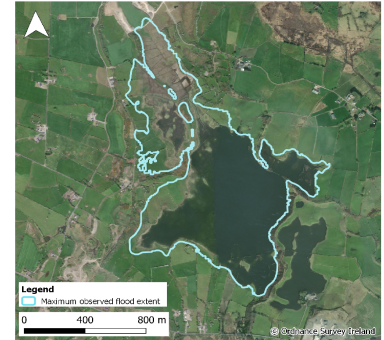


Monitoring Station Data Sheet

Coolcam, County Galway

Station Details

Site Name	Coolcam
County	Galway
X,Y (ITM)	557301, 770656
Site ID	W59028
Monitoring Type	GSI NON-ACTIVE
URL	
Monitoring Period	21 Jun, 2017 - 15 Aug, 2018
Current Logger Datum	81.73 mAOD
Lowest Known Elevation	81.0 mAOD



Peak Flood Observations

Details of the highest levels recorded by Geological Survey Ireland or external organisations (if available)

	GSI data	External data
Max Depth (m)*	4.02	
Max Stage (mAOD)	85.02	
Max Volume (m ³)	1,908,884	
Max Area (m ²)	965,610	
Date Occurred	19 Feb, 2018	

