

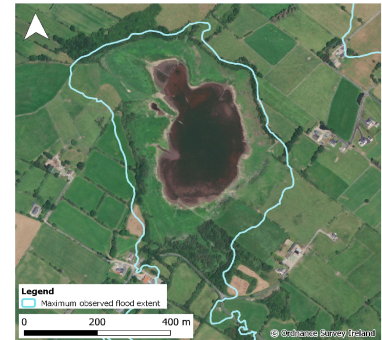


Monitoring Station Data Sheet

Lough Coy, County Galway

Station Details

Site Name	Lough Coy
County	Galway
X,Y (ITM)	548933, 707496
Site ID	W59033
Monitoring Type	GSI NON-ACTIVE
URL	
Monitoring Period	30 Nov, 2016 - 08 Aug, 2019
Current Logger Datum	8.54 mAOD
Lowest Known Elevation	7.5 mAOD



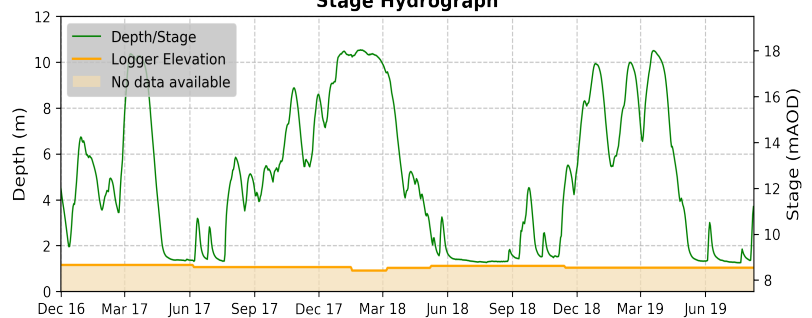
Peak Flood Observations

Details of the highest levels recorded by Geological Survey Ireland or external organisations (if available)

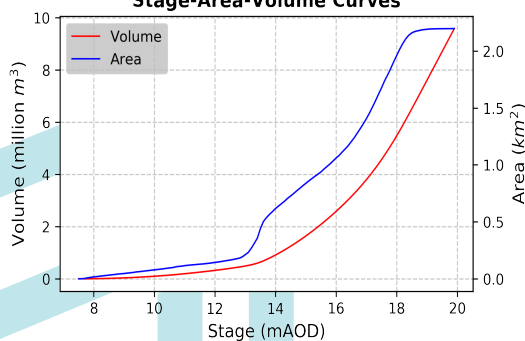
	GSI data	External data
Max Depth (m)	10.54	11.99
Max Stage (mAOD)	18.04	19.49*
Max Volume (m ³)	5,551,492	8,679,870
Max Area (m ²)	1,981,559	2,195,570
Date Occured	30 Jan, 2018	Winter 15/16

*Source: Gort Flood Relief Scheme, historic flood levels report. Ryan Hanley June 2018

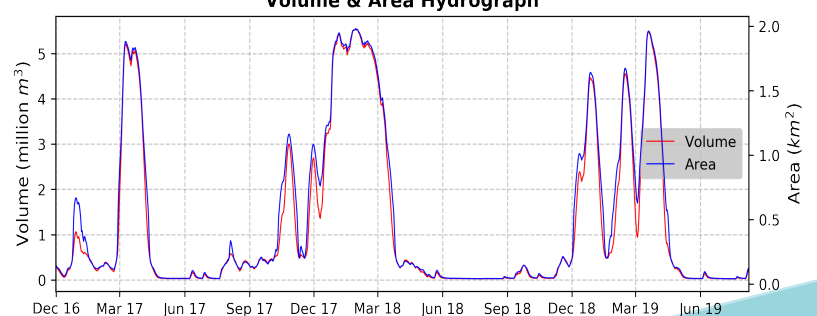
Stage Hydrograph



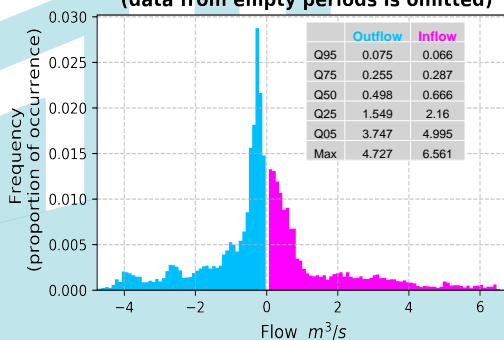
Stage-Area-Volume Curves



Volume & Area Hydrograph



Distribution of Average Daily Net Flows (data from empty periods is omitted)



Average Daily Net Flow Hydrograph

