

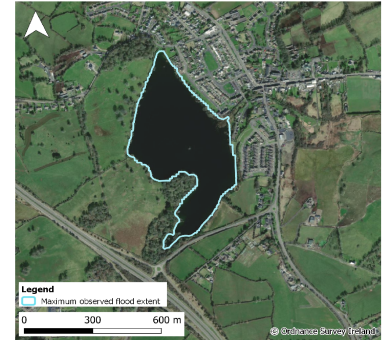


Monitoring Station Data Sheet

Lough Gash, County Clare

Station Details

Site Name	Lough Gash
County	Clare
X,Y (ITM)	539050, 667889
Site ID	W64004
Monitoring Type	GSI ACTIVE NON-TELEMETRY
URL	
Monitoring Period	12 Mar, 2019 - Ongoing
Current Logger Datum	9.38 mAOD
Lowest Known Elevation	7.5 mAOD



Peak Flood Observations

Details of the highest levels recorded by Geological Survey Ireland or external organisations (if available)

	GSI data	External data
Max Depth (m)*	6.05	
Max Stage (mAOD)	13.55	
Max Volume (m ³)	1,672,917	
Max Area (m ²)	464,981	
Date Occurred	25 Feb, 2020	

